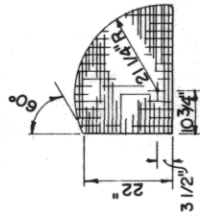
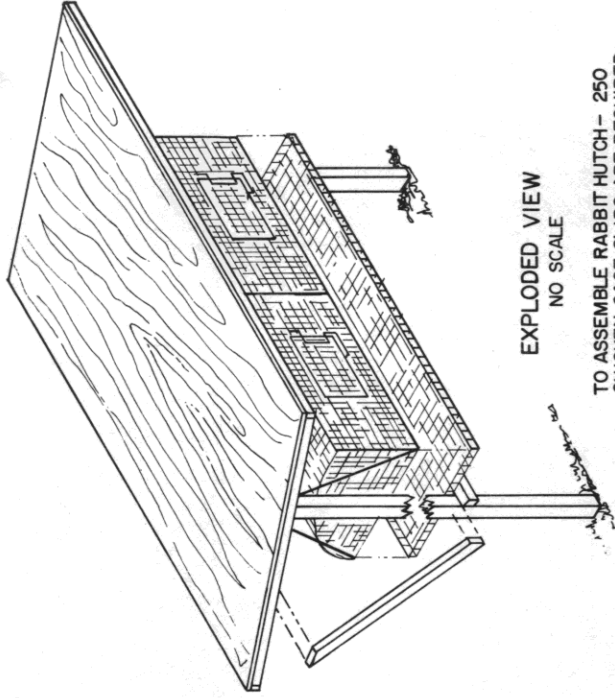


WIRE MESH CUTTING DIAGRAM
 1-PIECE OF WELDED, 14 GAUGE GALVANIZED WIRE, 1" x 2" MESH, 6' WIDE AND 11'-4" LONG.

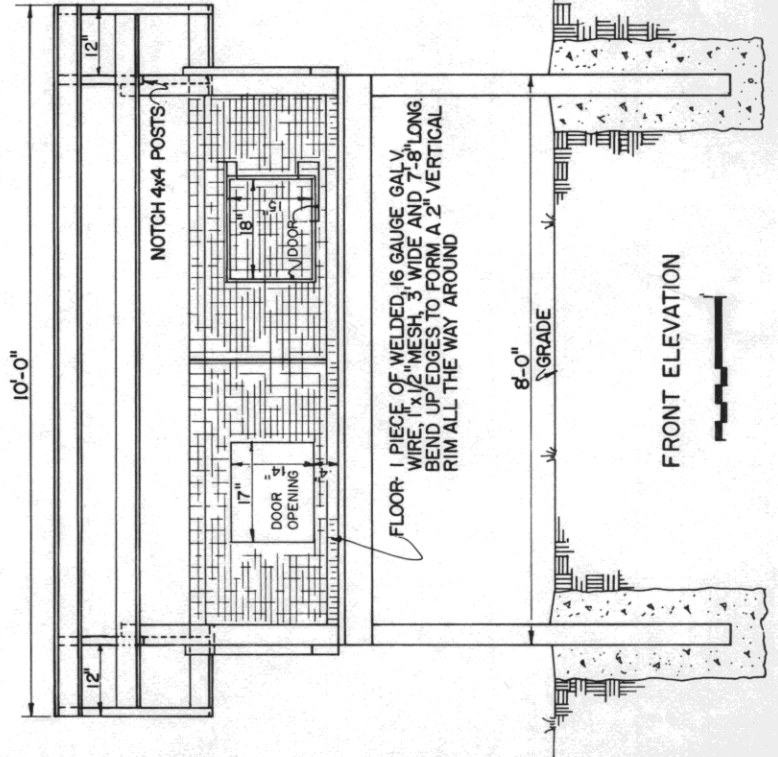


PATTERN FOR SIDE OF CAGE AND CENTER PARTITION

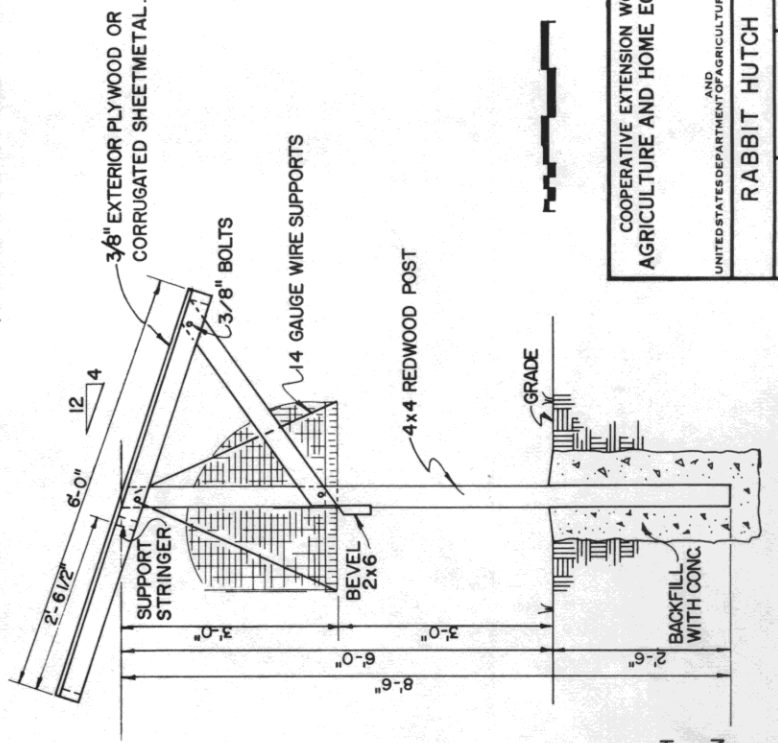


EXPLODED VIEW
 NO SCALE

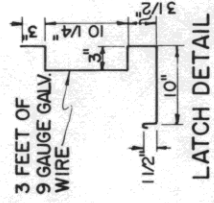
TO ASSEMBLE RABBIT HUTCH - 250 CHICKEN CAGE CLIPS ARE REQUIRED. (SPECIAL PLIERS ARE NEEDED TO APPLY THEM)



FRONT ELEVATION



SIDE ELEVATION



LATCH DETAIL

NOTE: CONSULT LOCAL HEALTH AND BUILDING CODE AUTHORITIES BEFORE STARTING CONSTRUCTION

COOPERATIVE EXTENSION WORK IN AGRICULTURE AND HOME ECONOMICS	
UNITED STATES DEPARTMENT OF AGRICULTURE COOPERATING	
RABBIT HUTCH	
CALIF. '77	SHEET 1 OF 1