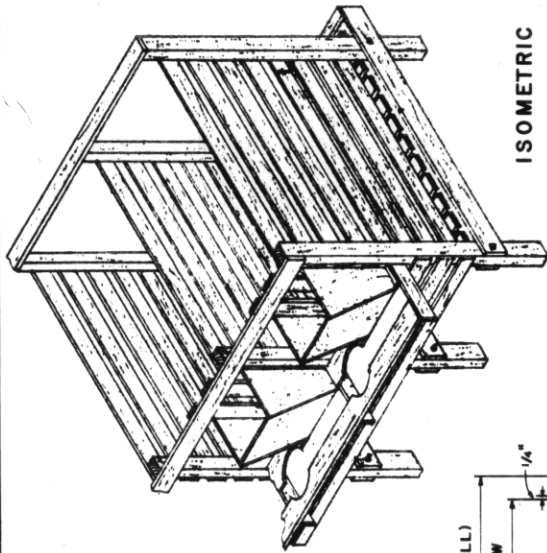
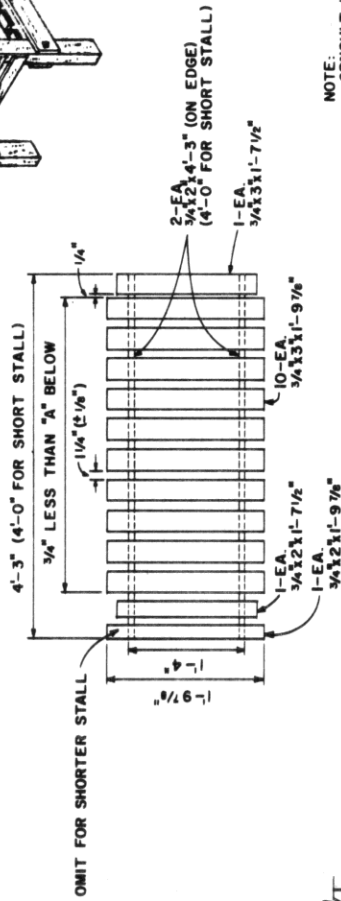


LIST OF MATERIALS  
(All Sound Quality Planned Hardwood Lumber Having Good Resistance to Decay.)

SIZE*	LENGTH	QUANTITY	SIZE*	LENGTH	QUANTITY
3/4" x 2"	19 1/2"	1 per Stall	2" x 3"	4'-3"	1 per Stall
"	21 7/8"	1 per Stall	MILLS: 1 1/2" (Common or Hardened)	4'-0"	1 per Stall
"	4 3/4"	7 per Stall	3/4" x 2"	12"	1 per Stall
3/4" x 3"	21 7/8"	10 per Stall	2" (Common or Hardened)	12"	1 per Stall
"	27"	2 per Stall	BOLTS: 3/8" x 4" Mech.	2 per Stall	2 per Stall
"	4'-0"	7 per Stall	WASHERS: 3/8" Flat	4 per Stall	4 per Stall
"	5'-0"	1 per Stall	ALL wood sizes "Actual"		
3/4" x 4"	4'-6"	2 per Stall	omit -6" for weal calves to 300 lb.		
			omit -6" for weal calves to 200 lb.		
			Only 4'-0" for calves to 200 lb.		



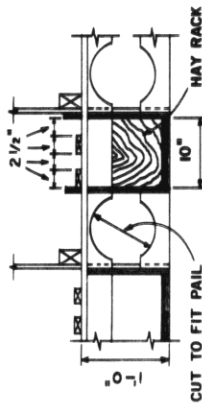
ISOMETRIC



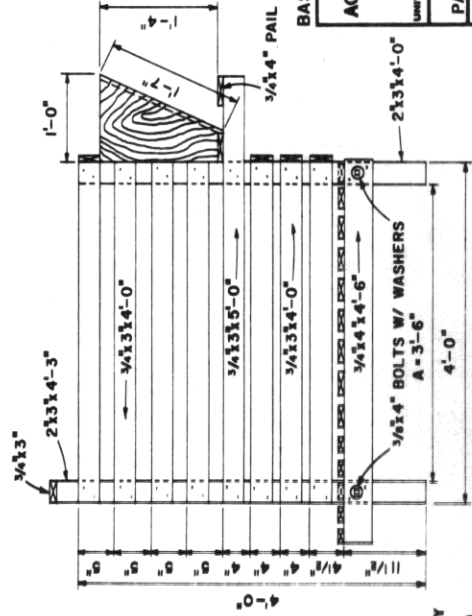
TOP VIEW-REMOVABLE BOTTOM



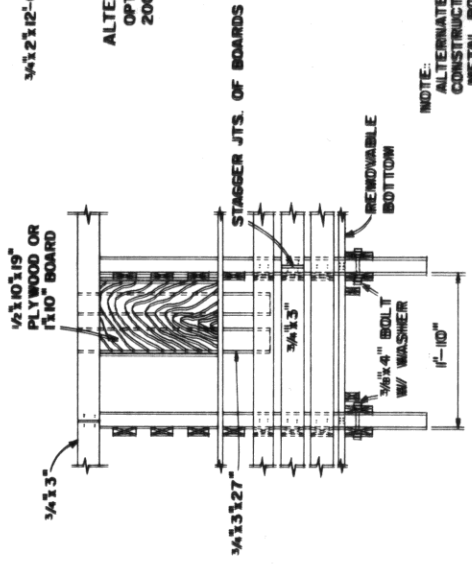
ALTERNATE SHORT STALL  
OPTIONAL FOR CALVES TO  
200# OR 8 WEEKS OLD.



TOP VIEW



SIDE VIEW



FRONT VIEW

NOTE:  
CONSULT LOCAL HEALTH AND  
BUILDING CODE AUTHORITIES  
BEFORE STARTING CONSTRUCTION.

Mention of these firms does  
not constitute an endorsement  
by the Department of either  
their products or prices. No  
discrimination is intended,  
and no guarantee of reliability  
is implied.

SCALE: 1" = 1'-0" UNLESS  
OTHERWISE NOTED



BASED ON: UNIV. OF KY. PLAN IL772-34  
COOPERATIVE EXTENSION WORK IN  
AGRICULTURE AND HOME ECONOMICS

UNITED STATES DEPARTMENT OF AGRICULTURE COOPERATIVE

ELEVATED CALF STALL  
PAIL, HAY AND GRAIN FEEDING  
KY. '75 6 199 SHEET 1 OF 1