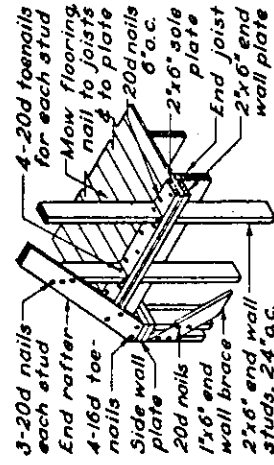
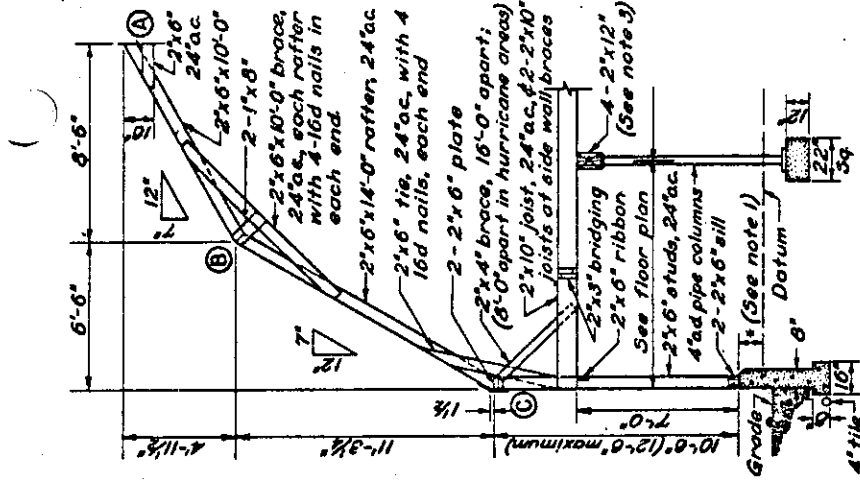


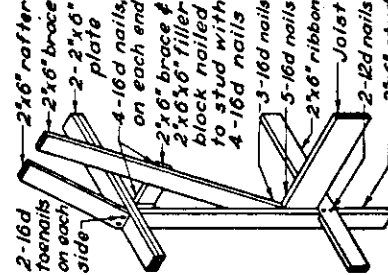
32'-0" BARN - 2 STORY
 LOOSE HAY - 0.85 TONS PER LIN. FT.
 BALED HAY - MAXIMUM DEPTH 10 FT.



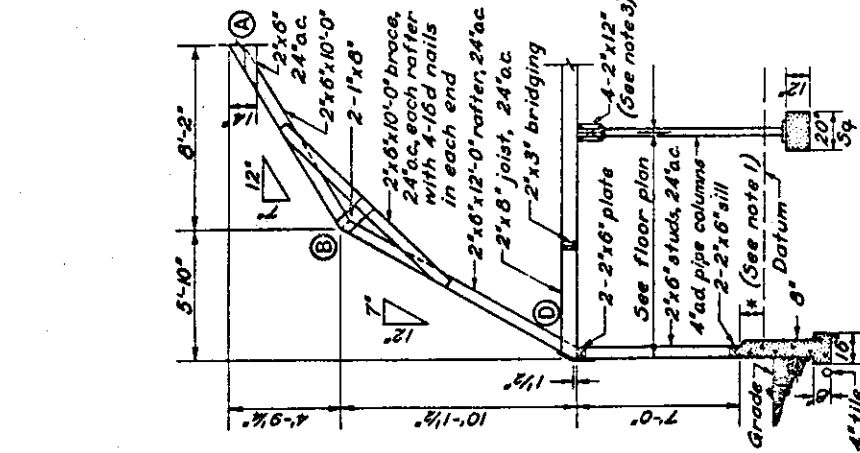
28'-0" BARN END-WALL FRAMING



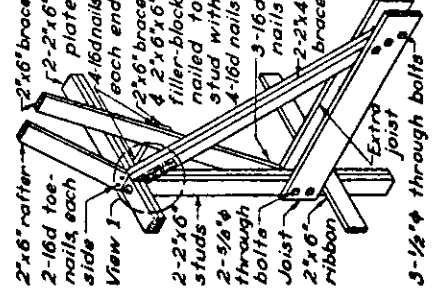
30'-0" BARN - 2 STORY
 LOOSE HAY - 0.65 TONS PER LIN. FT.
 BALED HAY - MAXIMUM DEPTH 8 FT.



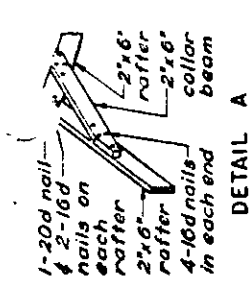
DETAIL C
 NORMAL SIDE-WALL CONNECTION



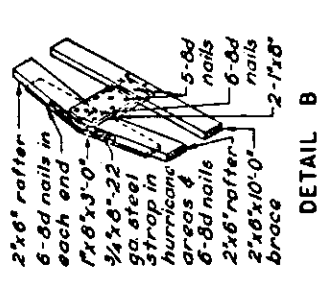
28'-0" BARN - 1 1/2 STORY
 LOOSE HAY - 0.50 TONS PER LIN. FT.
 BALED HAY - MAXIMUM DEPTH 8 FT.



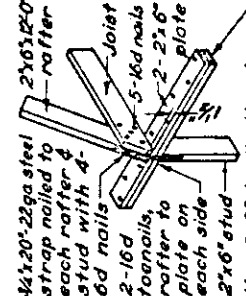
DETAIL C
 SIDE-WALL BRACE



DETAIL A

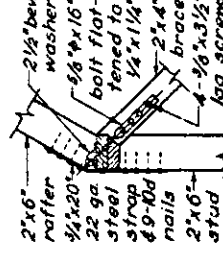


DETAIL B



DETAIL D

NOTES:
 1 *Variable dimension, see foundation detail (dwg 5661)
 2 Use 4-2x12" girders if columns are spaced 10'-0" or less apart. Column spacing not to exceed 12'-0".
 3 Use 4-2x10" girders if columns are spaced 10'-6" or less apart. Column spacing not to exceed 12'-0".
 4 Wall foundations to extend below frost to solid ground. Carry column footings to solid ground.



VIEW 1

COOPERATIVE EXTENSION WORK IN AGRICULTURE AND HOME ECONOMICS	
UNITED STATES DEPARTMENT OF AGRICULTURE	
BRACED RAFTER FRAMING	
SPANS 28 FEET TO 32 FEET	
USDA '49	EX. 5626
	SHEET 1 OF 1