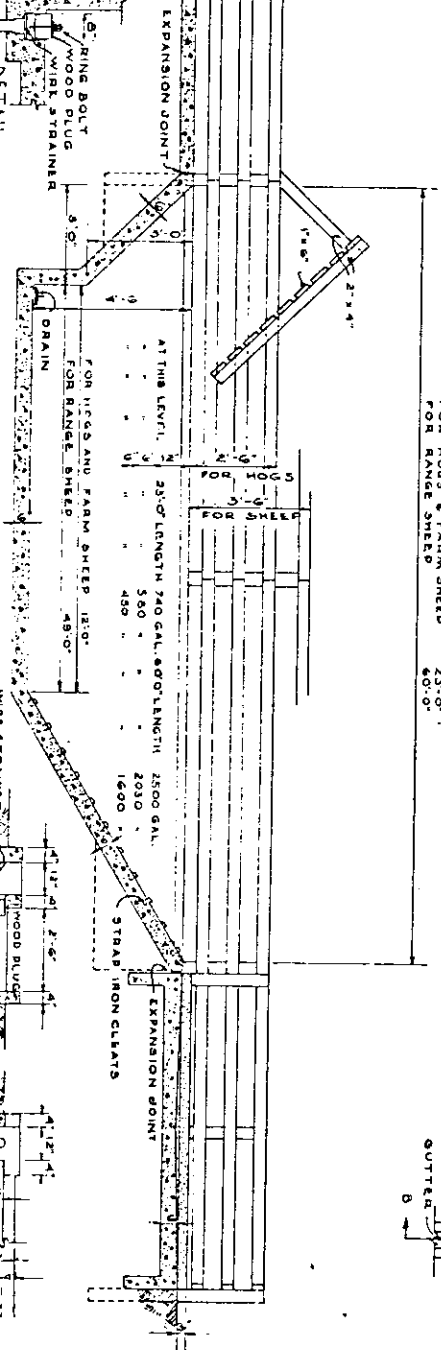


CROSS SECTION

DETAIL OF FIT VAT DRAIN

LONGITUDINAL SECTION

DETAIL SECTIONS OF THE DUNP



CONCRETE

33 CEMENT	60' LENGTH	DRAINING PEN
31 BAGS	72' BAGS	18 BAGS
235 CU YDS	529 CU YDS	133 CU YDS
4300 CU YDS	10000 CU YDS	855 CU YDS

FITTINGS

20 LIN FT. 1/2" DIA. STRAP IRON FOR CLEATS
 SUFFICIENT 2" DRAIN PIPE TO SUIT
 14 LIN. FT. 2" GALV. IRON PIPE FOR DRAIN
 2-80# 2" GALV. IRON ELBOWS FOR SUMP
 GALV. IRON WIRE STRAINERS FOR SUMP
 1-1/2" RING BOLT FOR VAT DRAIN

FENCE

FOR HOSS & FARM SHEEP	FOR SHEEP
23-1/2" x 4" x 10" POSTS	2-1/2" x 4" x 10" POSTS
45-2" x 4" x 12" RAILS	40-2" x 4" x 12" RAILS
2-2" x 4" x 12" BATTENS	2-2" x 4" x 12" BATTENS

2-2" x 4" x 10" BLIND
 3-1" x 3/4" x 1/4"
 4 PAIRS HEAVY "C" TEE HINGLES

ADAPTED FROM
 U.S.D.A. PLAN

COOPERATIVE EXTENSION WORK IN
 AGRICULTURE AND HOME ECONOMICS
 STATE OF MARYLAND
 UNIVERSITY OF MARYLAND
 U.S. DEPT. OF AGRICULTURE COOPERATING
 EXT. AGR. ENGINEER-COLLEGE PARK, MD.

DIPPING VAT

MINISTERS' SECT. 2-33709 SILENT

FILE NO. 773-1