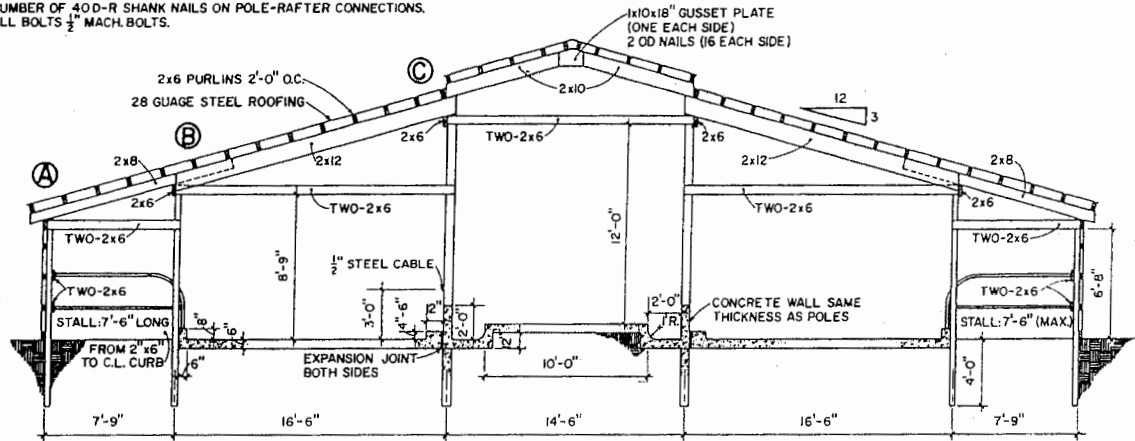


R=RING

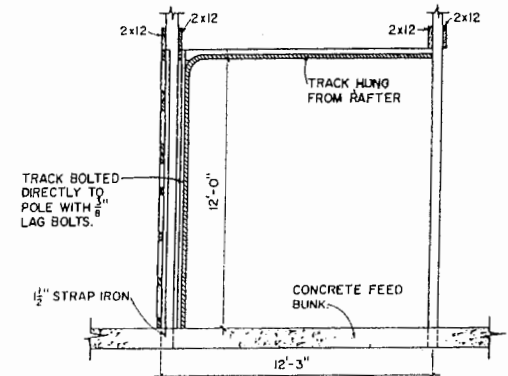
NOTE:

THREE 40D-R SHANK NAILS EACH 2x6 CONNECTION. USE SPECIFIED NUMBER OF 40D-R SHANK NAILS ON POLE-RAFTER CONNECTIONS. ALL BOLTS 1/2" MACH. BOLTS.

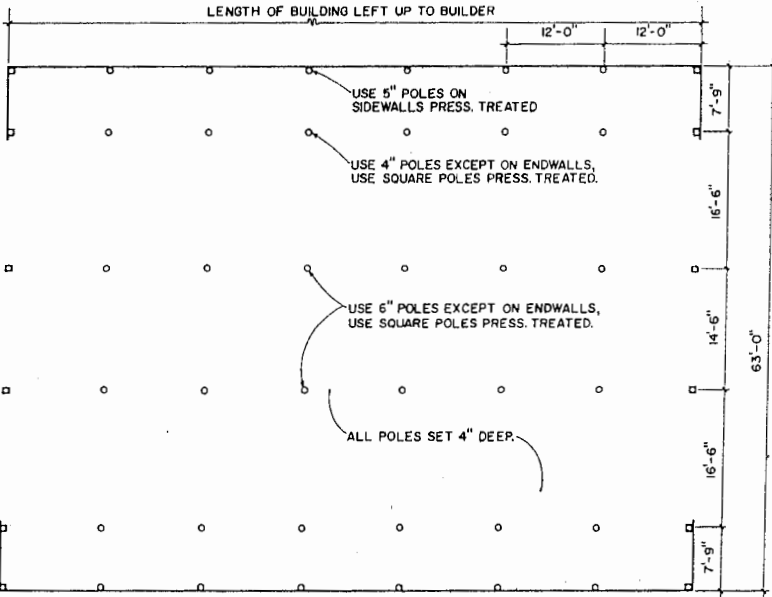


SECTION "A-A"

SCALE: 1/8" = 1'-0"

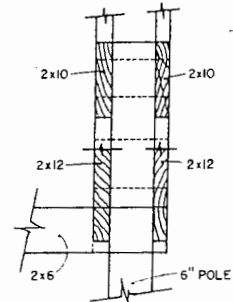


12' DOOR-SIDE VIEW



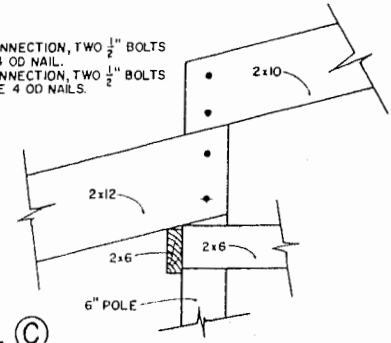
FLOOR PLAN

SCALE: 1/8" = 1'-0"

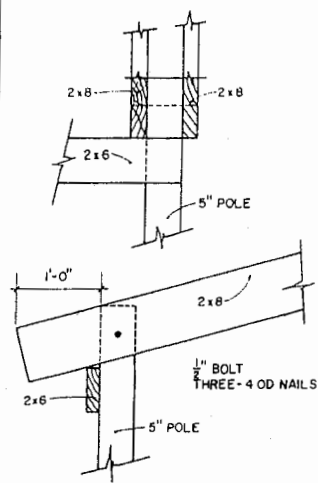


NOTE:

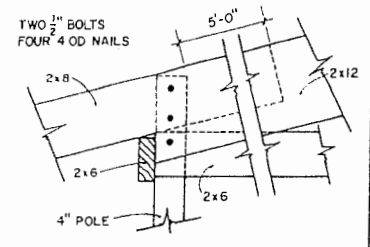
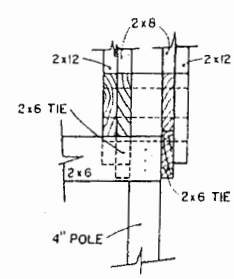
- 1) 2x10 CONNECTION, TWO 1/2" BOLTS & ONE 4 OD NAIL.
- 2) 2x12 CONNECTION, TWO 1/2" BOLTS & THREE 4 OD NAILS.



DETAIL C



DETAIL A



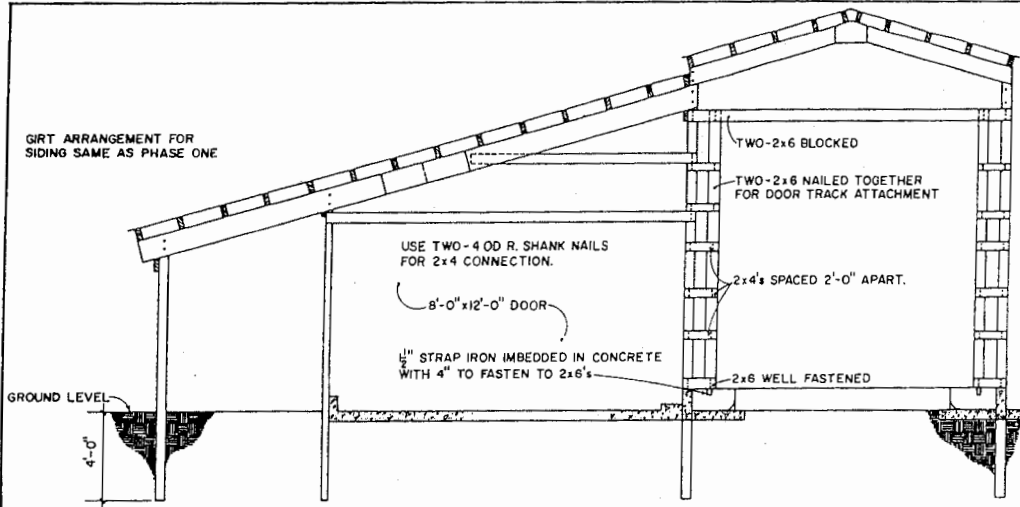
DETAIL B



HAY BARN

WYO. '78 6310 SHEET 1 OF 2

BASED ON UNIVERSITY OF WYOMING PLAN NO. FS-27



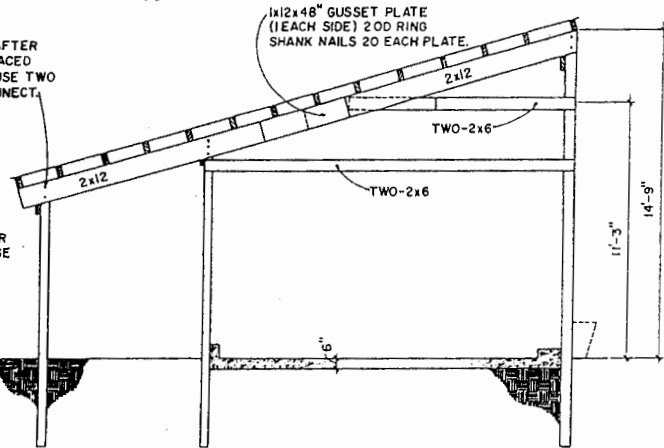
PHASE 3 WITH DRIVE-THROUGH ALLEY

SCALE: $\frac{1}{4}$ " = 1'-0"

NOTE:

IN PHASE TWO, 2x8 RAFTER ON ENDWALLS IS REPLACED WITH A 2x12 RAFTER. USE TWO $\frac{3}{4}$ " MACH. BOLTS TO CONNECT.

1x12x48" GUSSET PLATE (EACH SIDE) 2 OD RING SHANK NAILS 20 EACH PLATE.

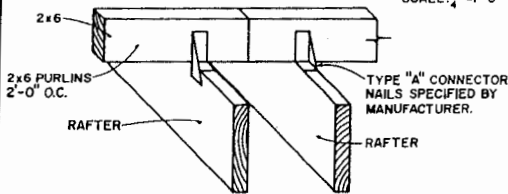


NOTE:

GIRT ARRANGEMENT FOR SIDING SAME AS IN PHASE ONE.

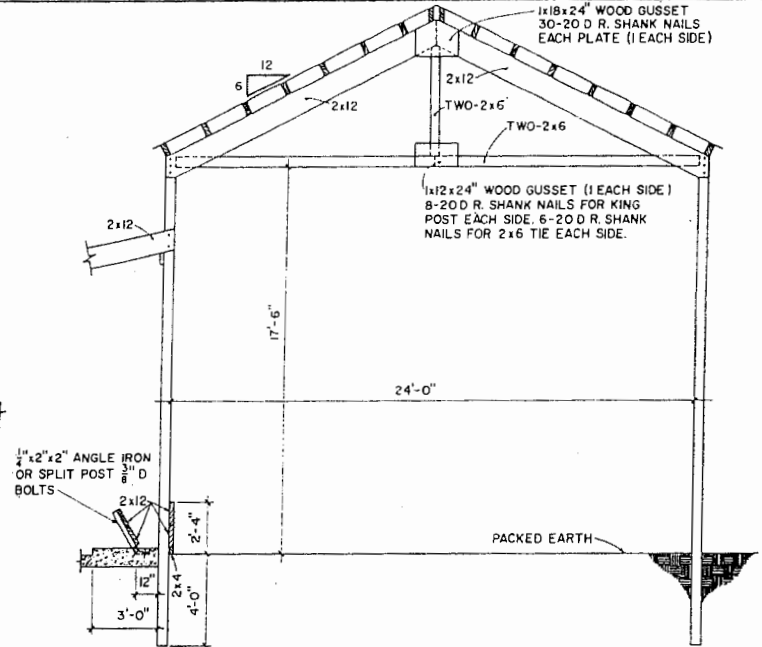
PHASE 2

SCALE: $\frac{1}{4}$ " = 1'-0"



PURLIN TIE TO RAFTER

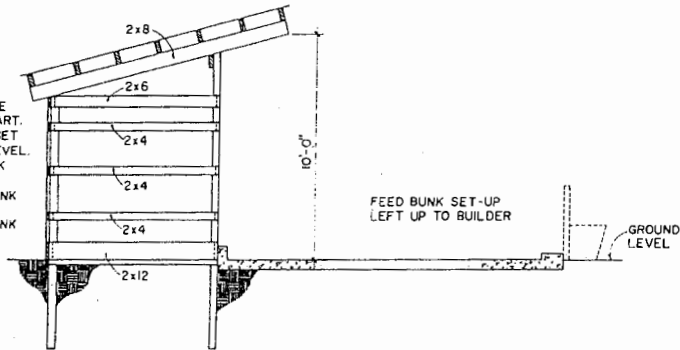
SCALE: $\frac{1}{2}$ " = 1'-0"



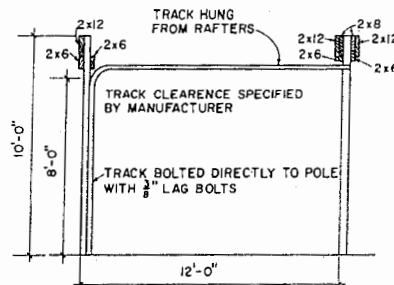
HAY BARN AS AN ALTERNATE TO DRIVE-THROUGH ALLEY

NOTE:

2x4 END GIRTS AND SIDE GIRTS SPACED 2'-0" APART. 2x12 PRESS. TREATED SET 4'-0" BELOW GROUND LEVEL. USE TWO-40D R. SHANK NAILS ON 2x4's. USE THREE-40D R. SHANK NAILS ON 2x12. USE THREE-40D R. SHANK NAILS ON 2x6.



PHASE 1



8' DOOR SIDE VIEW

LSU Ag Center Research & Extension		
HAY BARN		
WYO. '78	6310	SHEET 2 OF 2

Disclaimer

This site makes available conceptual plans that can be helpful in developing building layouts and selecting equipment for various agricultural applications. These plans do not necessarily represent the most current technology or construction codes. They are not construction plans and do not replace the need for competent design assistance in developing safe, legal and well-functioning agricultural building system. The LSU Agriculture Center, the Mid-West Plan Service, the United States Department of Agriculture and none of the cooperating land-grant universities warranty these plans.