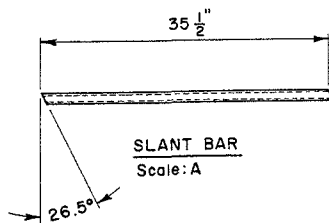
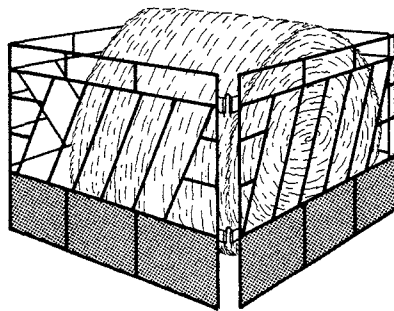


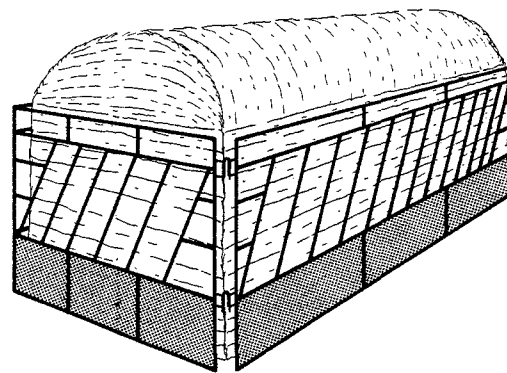
DETAIL "A"  
Scale: B



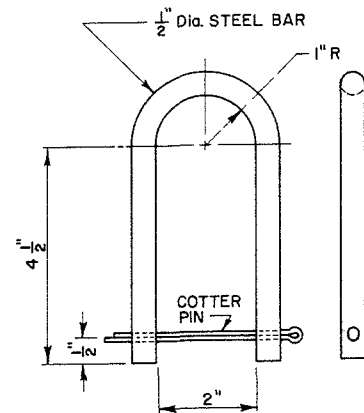
SLANT BAR  
Scale: A



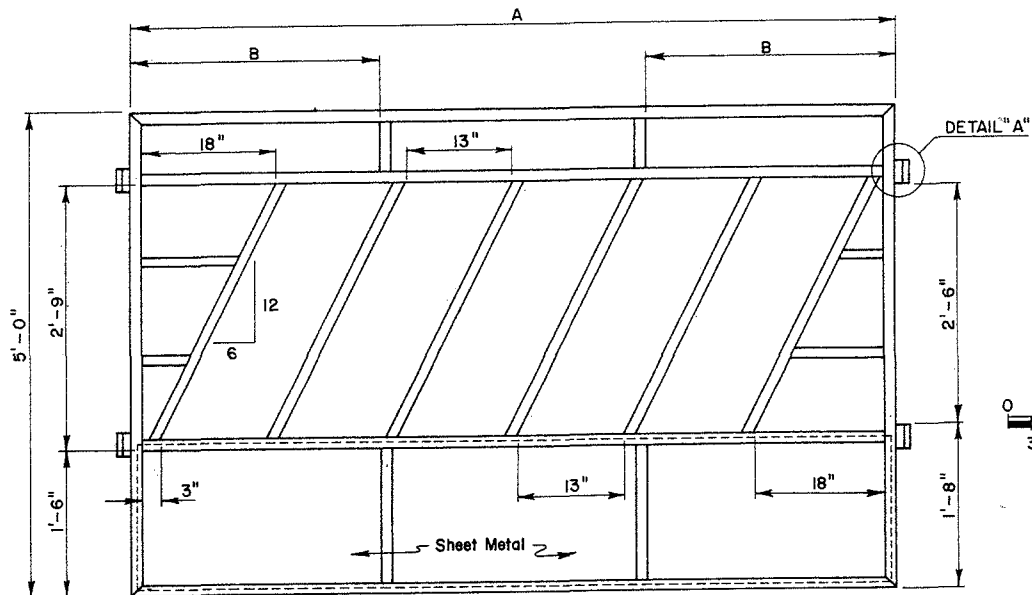
PERSPECTIVE



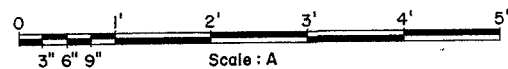
PERSPECTIVE



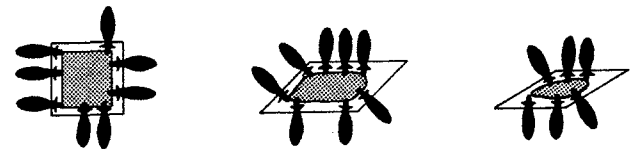
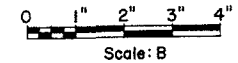
PANEL CONNECTOR PIN  
Scale: B



FEEDER PANEL  
Scale: A



BASED ON: OKLA. STATE UNIV.  
PLAN NO. OK-724-28



NOTE:  
1/2" Dia. x 16 Ga. (.065") Round  
Tubing May Be Substituted  
For The Square Tubing

Bill Of Material (Per Panel)	8'	10'	12'	14'	16'
1 1/4" x 16 Ga. (.065") Square Tubing	68'	83'	98'	113'	120'
18" x 20 Ga. (.0359") Sheet Steel	7'-11"	10'-1"	12'-3"	14'-5"	15'-6"
1/4" x 1" Steel Bar	12"	12"	12"	12"	12"
1/2" Dia. Pipe	12"	12"	12"	12"	12"
1/2" Dia. Steel Bar	2'-2"	2'-2"	2'-2"	2'-2"	2'-2"
APPROX. WEIGHT PER PANEL, Lbs.	93	113	134	155	164
Dimension					
A	8'-0"	10'-2"	12'-4"	14'-6"	15'-7"
B	2'-6"	3'-4"	4'-0"	4'-10"	5'-2"

**LSU AgCenter**  
Research & Extension

<b>SLANT BAR FEEDER PANELS</b>		
OK. '76	<b>6242</b>	SHEET 1 OF 1

## Disclaimer

This site makes available conceptual plans that can be helpful in developing building layouts and selecting equipment for various agricultural applications. These plans do not necessarily represent the most current technology or construction codes. They are not construction plans and do not replace the need for competent design assistance in developing safe, legal and well-functioning agricultural building system. The LSU Agriculture Center, the Mid-West Plan Service, the United States Department of Agriculture and none of the cooperating land-grant universities warranty these plans.