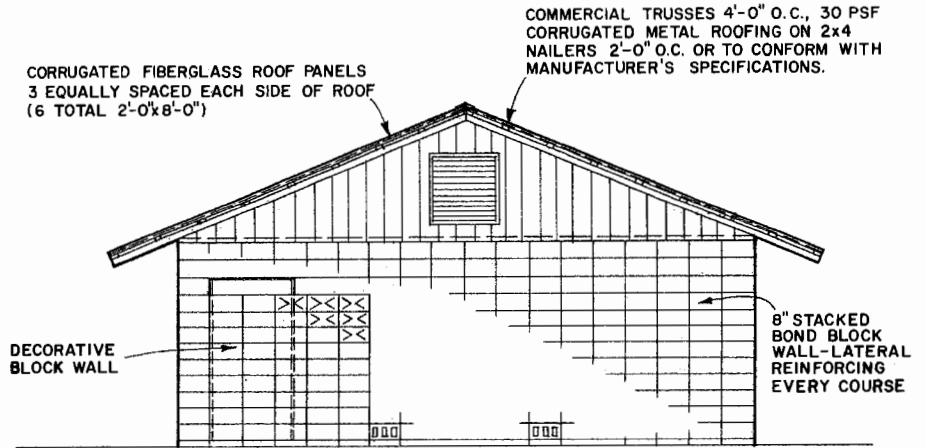
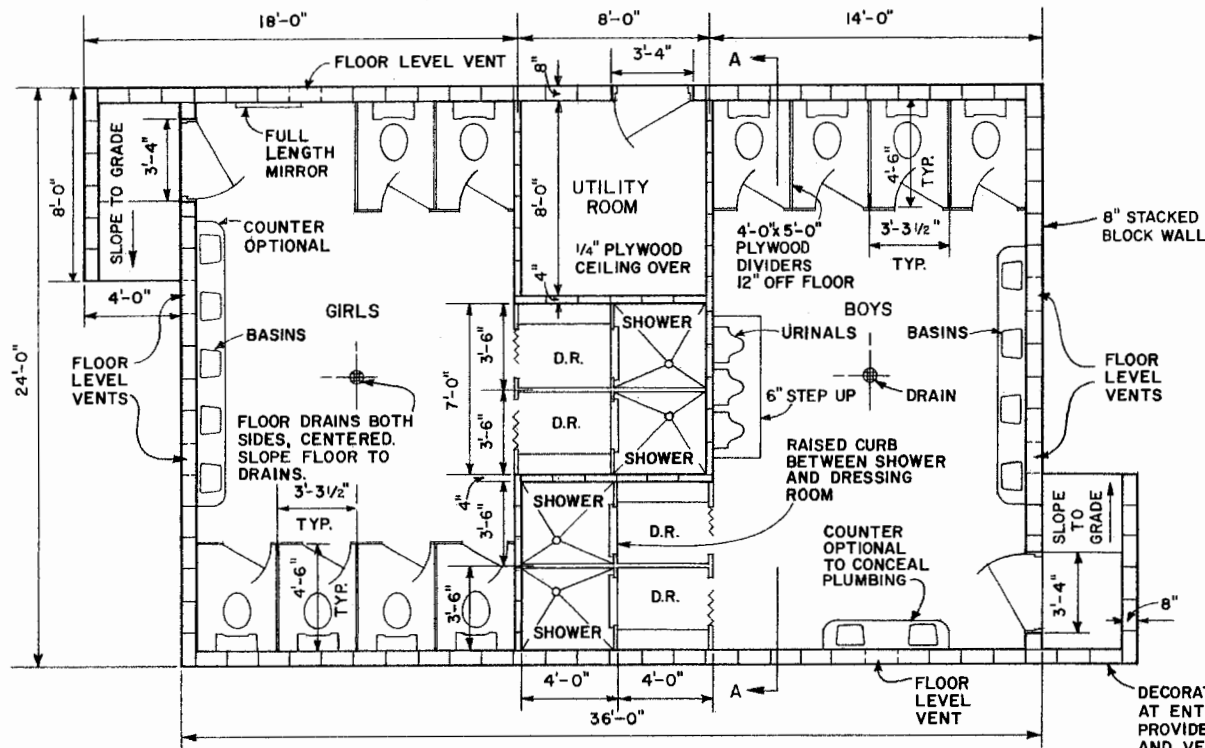


SIDE ELEVATION
SCALE: 1/4"=1'-0"

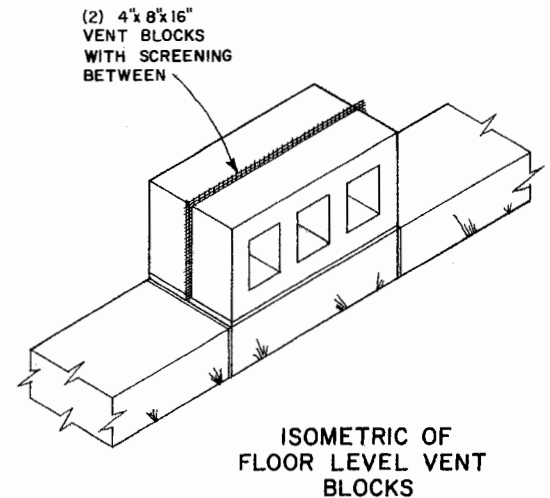


SIDE ELEVATION
ALTERNATE CONSTRUCTION
SCALE: 1/4"=1'-0"

FINISH
INTERIOR - FINISH BLOCKS WITH COATING OF EPOXY PAINT
EXTERIOR - (IF DESIRED) CEMENT WATER PAINT



PLAN
SCALE: 1/4"=1'-0"



ISOMETRIC OF FLOOR LEVEL VENT BLOCKS

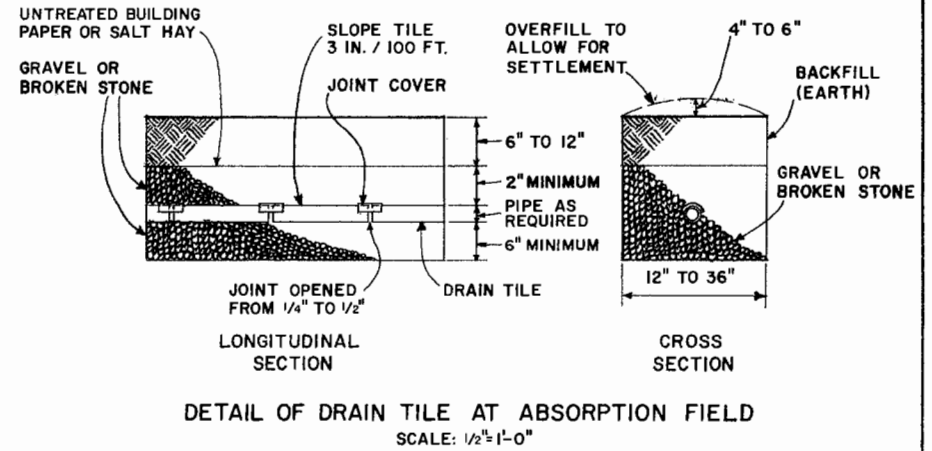
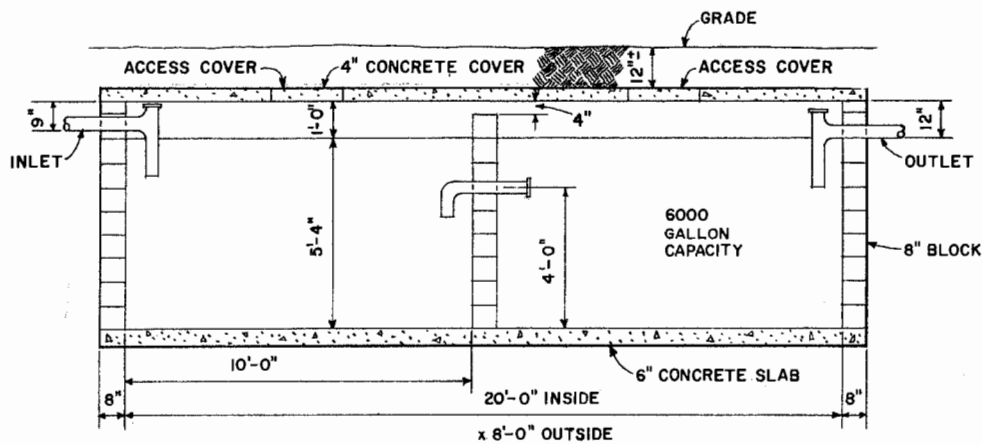
FACILITIES FOR 50 CAMPSITES
CONSULT STATE AND LOCAL AUTHORITIES BEFORE STARTING CONSTRUCTION



CAMPGROUND COMFORT STATION

N. J. '69 6083 SHEET 1 OF 3

BASED ON: RUTGERS - THE STATE UNIVERSITY
NEW JERSEY PLAN NO. 149

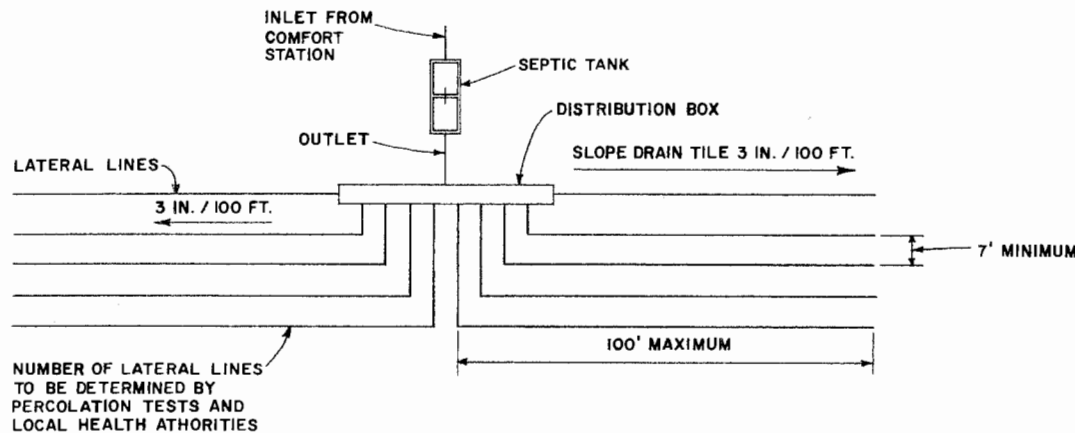


50 CAMPSITES

4 PERSONS PER CAMPSITE
 35 GALLONS WATER PER PERSON PER DAY
 6000 GALLON SEPTIC TANK REQUIRED MINIMUM
 DRAINAGE FIELD SIZE DETERMINED BY PERCOLATION TEST - SEE AGRICULTURAL INFORMATION BULLETIN # 274 "FARMSTEAD SEWAGE AND REFUSE DISPOSAL"
 7000 GALLON / DAY WATER REQUIREMENT
 40 GPM PUMP CAPACITY AT 25-45 POUNDS PRESSURE

| | |
|------------------|---------------|
| 4 SHOWERS | AT 5 GPM = 20 |
| 11 BASINS | AT 4 GPM = 44 |
| 3 URINALS | AT 5 GPM = 15 |
| 10 WATER CLOSETS | AT 3 GPM = 30 |
| TOTAL - 109 GPM | |

ASSUME WORST CONDITION OF 4 SHOWERS, 2 BASINS, 1 URINAL, 2 WATER CLOSETS RUNNING AT ONE TIME OR 40 GPM AT 40 PSI
 60 GALLON HOT WATER HEATER REQUIRED GAS FIRED OR EQUIVALENT.



CAMPGROUND COMFORT STATION

N.J. '69 6083 SHEET 3 OF 3

Disclaimer

This site makes available conceptual plans that can be helpful in developing building layouts and selecting equipment for various agricultural applications. These plans do not necessarily represent the most current technology or construction codes. They are not construction plans and do not replace the need for competent design assistance in developing safe, legal and well-functioning agricultural building system. The LSU Agriculture Center, the Mid-West Plan Service, the United States Department of Agriculture and none of the cooperating land-grant universities warranty these plans.