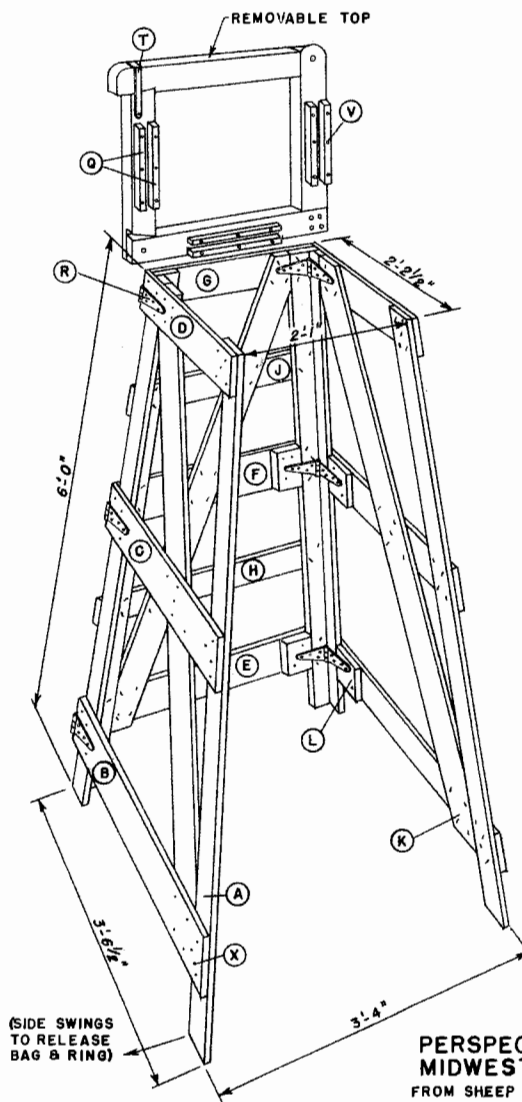


NOTE:  
ENTIRE RACK TO  
BE MADE OF ROUGH  
LUMBER.

PERSPECTIVE OF  
VIRGINIA TYPE RACK

MATERIAL LIST

ITEM	SIZE	QUANTITY
CORNER POSTS	2 x 4 x 14'-0"	2
BAG HOLDER BRACE	1 x 6 x 1'-0"	1
STEPS (TWO SIDES)	1 x 4 x 8'-0"	4
DIAGONAL BRACE AND BOTTOM TIES	1 x 4 x 12'-0"	1
BAG HOLDER AND TOP FRAME	1 x 4 x 14'-0"	1
METAL CORNER TIES		4
WOOD SCREWS (FLATHEAD)	1" - NO. 10	16
	2" - NO. 10	38
NAILS (RING OR SCREW SHANK)	8d.	1LB.



(SIDE SWINGS  
TO RELEASE  
BAG & RING)

PERSPECTIVE OF  
MIDWEST TYPE RACK  
FROM SHEEP EQUIPMENT PLANS  
MIDWEST PLAN SERVICE, AMES, IOWA.

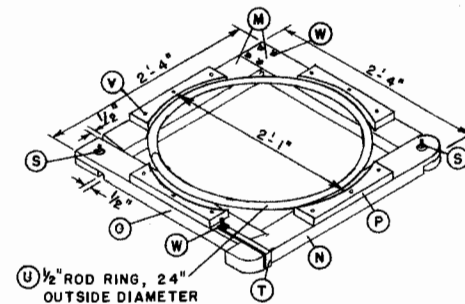
USE OF THE WOOL PACKING RACK

FIRST, PLACE THE BAG IN THE RACK WITH THE MOUTH OF THE BAG FOLDED DOWN OVER THE TOP OF THE FRAME ABOUT 6" (IT MAY BE NECESSARY TO CUT THE SEAM OF SMALL-MOUTH BAGS ABOUT 4").

NEXT, PLACE THE BAG HOLDER DOWN OVER THE TOP OF THE RACK TO HOLD THE BAG SECURELY.

AFTER SHEARING EACH SHEEP, TIE THE FLEECE WITH PAPER TWINE. PACK THE FLEECES INTO THE BAG IN LAYERS OF 4 OR 5 BY CLIMBING INTO THE BAG AND TRAMPING THE WOOL.

WHEN THE BAG IS FILLED AND READY TO BE REMOVED PLACE A BOARD UNDER IT AND RAISE SLIGHTLY. THIS WILL RELEASE THE PRESSURE AT THE TOP SO THE BAG WILL NOT TEAR WHEN THE BAG HOLDER IS REMOVED. CAPACITY OF THE BAG IS ABOUT 200 POUNDS.



REMOVABLE TOP

CUTTING LIST

ITEM	DESCRIPTION	QUANTITY
A	1 x 4 x 6'-0" CORNER POSTS	2
B	1 x 6 x 3'-6 1/2" BOTTOM TIE	2
C	1 x 6 x 2'-11" MIDDLE TIE	2
D	1 x 6 x 2'-4" TOP TIE OR FRAME	2
E	1 x 6 x 3'-5" BOTTOM TIE OR STEP	1
F	1 x 6 x 2'-10" MIDDLE TIE OR STEP	1
G	1 x 6 x 2'-3" TOP TIE OR FRAME	1
H	1 x 4 x 2'-11" INTERMEDIATE STEP	1
J	1 x 4 x 2'-4" INTERMEDIATE STEP	1
K	1 x 4 x 6'-0" DIAGONAL BRACES	3
L	1 x 6 x 4" HINGE BLOCKING	4
M	2 x 4 x 2'-4" HARDWOOD FRAME	2
N	2 x 4 x 2'-6" HARDWOOD FRAME	1
O	2 x 4 x 2'-1" HARDWOOD FRAME	1
P	1 x 3 x 12" HARDWOOD (BAG HOLDER)	4
Q	1 x 1 x 12" HARDWOOD (CLAMPS)	6
R	6" STRAP HINGES (WITH SCREWS)	6
S	3/8" x 2 1/2" BOLT	2
T	3/16" x 1/2" x 18" STRAP	1
U	1/2" x 6'-3 1/2" ROD	1
V	1 3/4" - NO. 8 FLATHEAD WOOD SCREWS	30
W	1/4" x 2 1/2" BOLT	5
X	6d (RING OR SCREW SHANK) NAILS	1LB.

NOTE: ENTIRE RACK TO BE MADE OF ROUGH LUMBER.

\*DETAILS OF A WOOL BOX USED FOR TYING FLEECE - SEE PLAN EX.5805



WOOL PACKING RACKS

USDA '60 EX. 5911 SHEET 1 OF 1

## Disclaimer

This site makes available conceptual plans that can be helpful in developing building layouts and selecting equipment for various agricultural applications. These plans do not necessarily represent the most current technology or construction codes. They are not construction plans and do not replace the need for competent design assistance in developing safe, legal and well-functioning agricultural building system. The LSU Agriculture Center, the Mid-West Plan Service, the United States Department of Agriculture and none of the cooperating land-grant universities warranty these plans.