

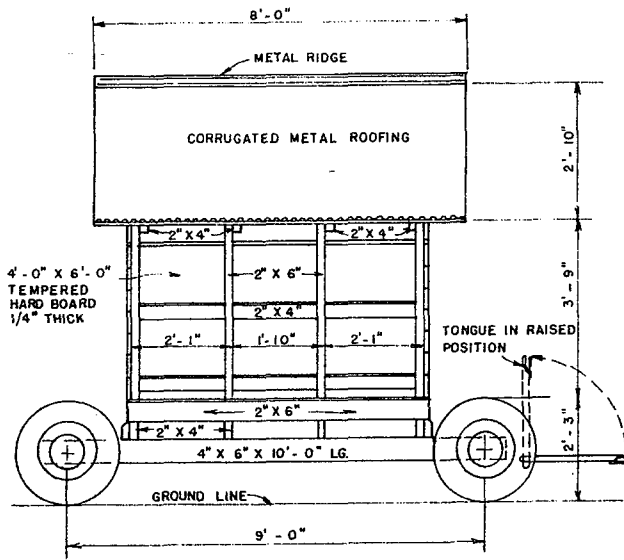
BILL OF MATERIALS

LUMBER

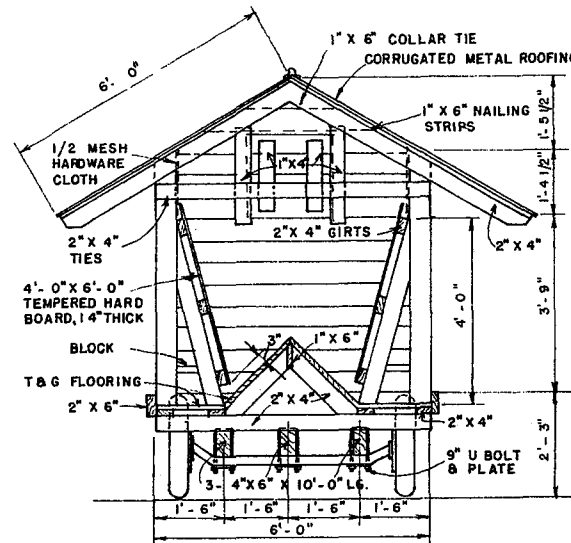
- 3 - 4" X 6" X 10'-0"
 - 6 - 2" X 4" X 6'-0"
 - 4 - 2" X 4" X 6'-0"
 - 2 - 2" X 6" X 6'-2"
 - 8 - 2" X 4" X 2'-0"
 - 1 - 1" X 6" X 6'-0"
 - 17 - 1" X 6" X 6'-0"
 - 8 - 2" X 6" X 6'-0"
 - 4 - 2" X 4" X 8'-0"
 - 6 - 2" X 4" X 6'-0"
 - 2 - 2" X 4" X 6'-0"
 - 8 - 2" X 4" X 6'-0"
 - 8 - 1" X 6" X 8'-0"
 - 2 - 1" X 4" X 8'-0"
 - 2 - 1" X 4" X 8'-0"
 - 2 - 1" X 6" X 2'-0"
 - 90 FT. B.M. 1" X 6"
- SILLS
JOISTS
TROUGH JOISTS (FLAT)
TROUGH SIDES
HOPPER FLOOR BRACES
HOPPER RIDGE
T & G SHEATHING
STUDS
SLANTING BRACES
BIN GIRTS
CROSS TIES
RAFTERS
ROOF NAILING STRIPS
VERGE BOARD
DOOR FRAMING
COLLAR TIES
SHIPLAP SIDING

MISCELLANEOUS

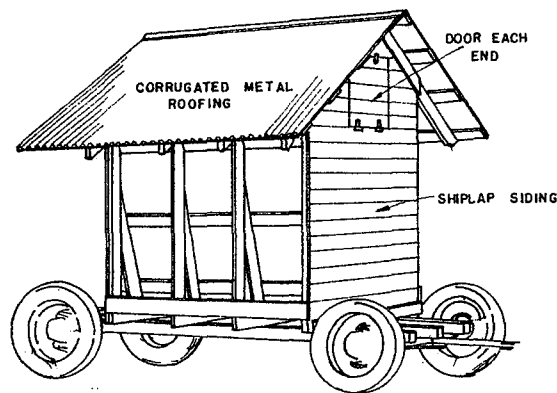
- 4 LBS. 8 COMMON NAILS
- 3 LBS 10 COMMON NAILS
- 1 LB 16 COMMON NAILS
- 2 PAIR 6" TEE HINGES
- 2 SHEETS 4'-0" X 6'-0" TEMPERED HARD BOARD, 1/4" THICK
- 8 SHEETS 26" WIDE X 6'-0" METAL ROOFING
- 1 METAL RIDGE 8'-0" LONG
- 7 L.F. 1/2" MESH HARDWARE CLOTH, 36" WIDE



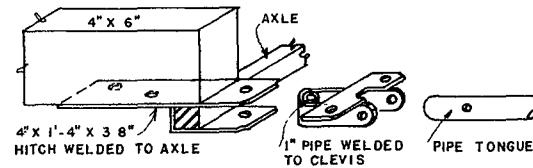
ELEVATION
SCALE 1/2" = 1'-0"



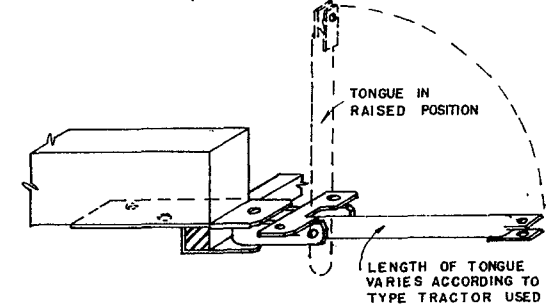
CROSS SECTION
SCALE 1/2" = 1'-0"



PERSPECTIVE



ISOMETRIC VIEW SHOWING PARTS FOR HITCH
(SIZES VARY ACCORDING TO TYPE OF AXLE USED)



ASSEMBLED VIEW OF HITCH

HITCH DETAILS
SCALE 1/2" = 1'-0"

NOTES

1. 600 X 16 WHEEL AND AXLE ASSEMBLY INDICATED. OTHER ASSEMBLIES MAY BE SUBSTITUTED WITH NECESSARY MODIFICATION PROVIDED FEED TROUGH HEIGHT AS SHOWN IS MAINTAINED.

2. CAPACITY:
APPROXIMATELY 60BU. GROUND FEED.



MOVABLE SELF-FEEDER FOR CATTLE

ENGINEER	SCALE NOTED
DRAWN BY—U.S.D.A. '53	SHEET 1 OF 1
TRACED BY G.E.D.	DATE 10-20-66 NO. 5776

Disclaimer

This site makes available conceptual plans that can be helpful in developing building layouts and selecting equipment for various agricultural applications. These plans do not necessarily represent the most current technology or construction codes. They are not construction plans and do not replace the need for competent design assistance in developing safe, legal and well-functioning agricultural building system. The LSU Agriculture Center, the Mid-West Plan Service, the United States Department of Agriculture and none of the cooperating land-grant universities warranty these plans.