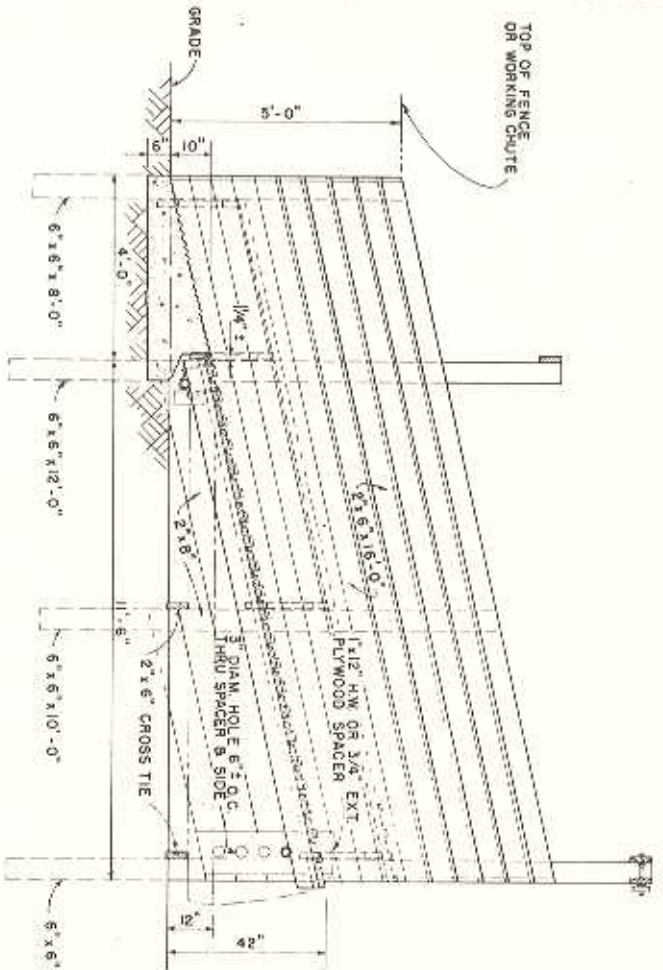
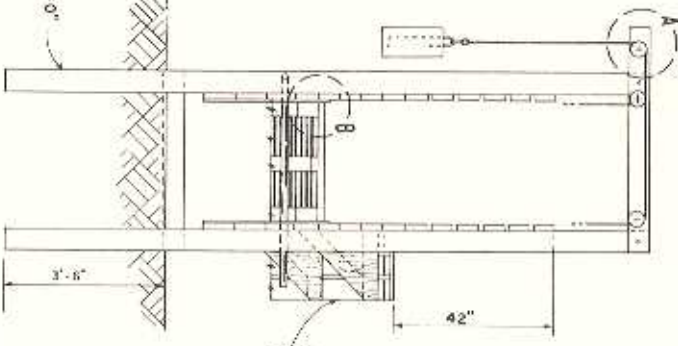


PLAN  
(HINGED RAMP NOT SHOWN)

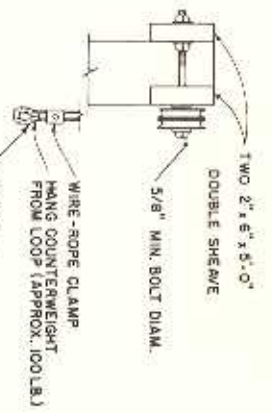


LONGITUDINAL SECTION

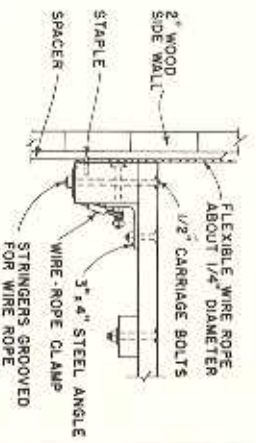


END ELEVATION

DETAIL AT (A)  
0 1 FT



DETAIL AT (B)



NOTE: ALL WOOD SHOULD BE PRESSURE-TREATED WITH PRESERVATIVE. DIMENSIONS SHOWN ARE BASED ON THE USE OF DRESSED LUMBER. EXCEPT AS NOTED



3/8" x 2" STEEL STRAP WITH TWO 1/2" BOLTS  
4" x 6" STRINGERS  
2" x 4" TIE  
THREE 3" x 6" STRINGERS MAY BE SUBSTITUTED

2" x 6" BOARDS SPACED ABOUT 1" APART  
1" x 3" HARDWOOD CLEATS

PLAN OF HINGED RAMP

