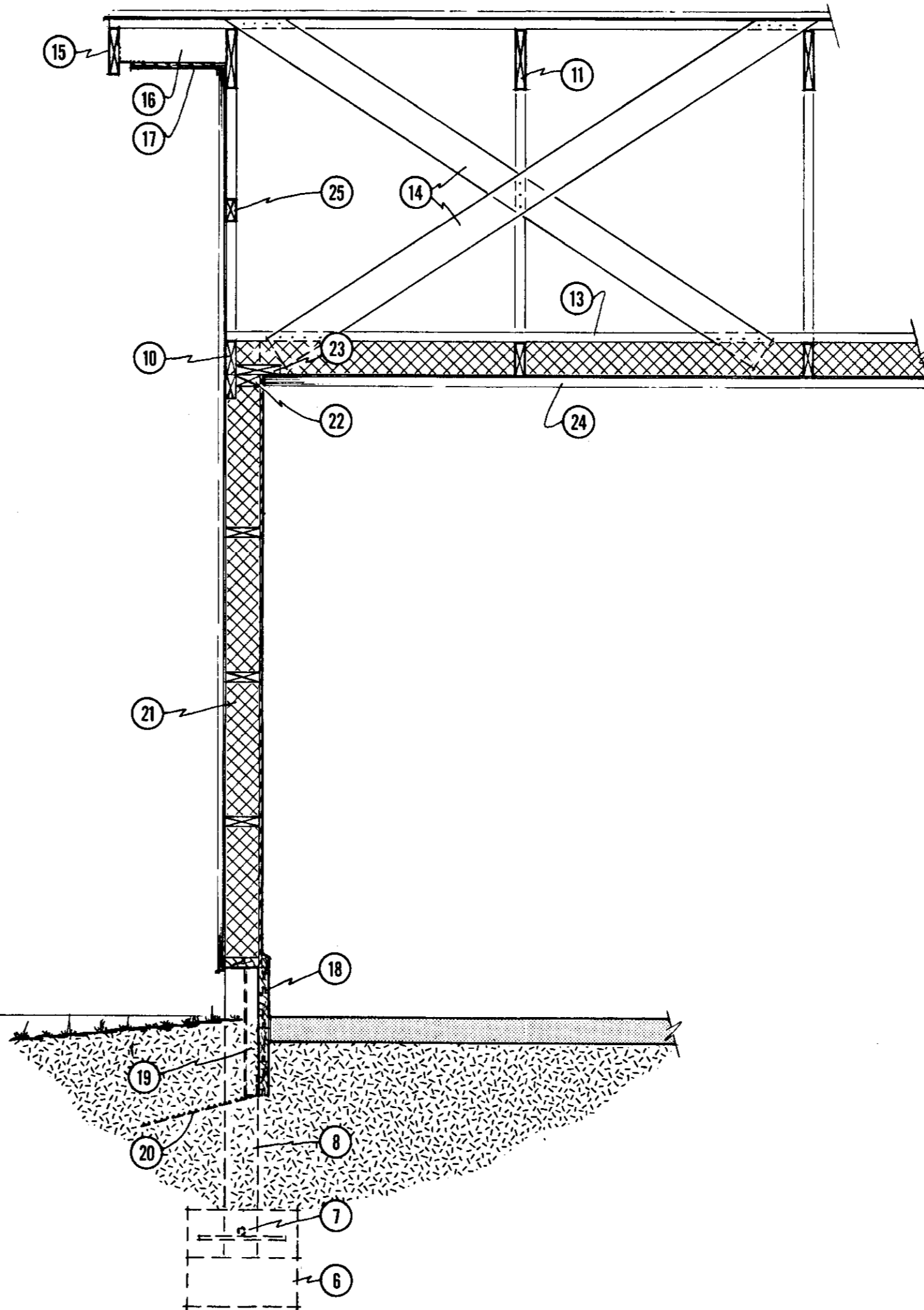


1 0 400 mm
1:20



3 0 400 mm
1:20

- ALL DIMENSIONS ARE IN MILLIMETRES (mm) UNLESS OTHERWISE SPECIFIED
- 1 insulated pole frame side wall section
 - 2 alternate plywood ceiling, see plan M-9374
 - 3 endwall section and truss bracing detail
 - 4 datum line
 - 5 footing depth to below frost, 1000 mm min., for colder climates increase to 1600 mm
 - 6 450 mm diam. concrete footing, increase diameter for wider building spans and softer soil; top of all footings same dimension below datum (4), pre-notch poles before erecting
 - 7 drill pole and retreat holes with wood preservative, insert 2-10M x 400 mm rebar, or use 8-150 mm spikes, place concrete around pole
 - 8 89 x 140 (or 140 x 140) x 4800 mm CCA-pressure-treated sawn poles @ 2400 mm oc (see M-9311 for pole size required)
 - 9 notch poles for 2-38 plates 4800 mm long, end joints staggered 2400 mm oc (see M-9312)
 - 10 endwall poles notched for 38 x 89 mm plate and truss lower chord
 - 11 trusses 1200 mm oc or to suit local snow loads
 - 12 M12 bolt and washers, truss to pole; intermediate trusses secured to (9) with galv. framing anchors
 - 13 38 x 89 mm continuous truss stiffener (see M-9102)
 - 14 38 x 140 mm truss bracing (see M-9102)
 - 15 38 mm face board
 - 16 38 mm blocking @ 1200 mm oc, supports (15) & (17)
 - 17 19 mm lumber or 12.5 mm plywood soffit, 50 mm continuous vent with galv. bird screen
 - 18 38 x 140 x 4800 mm CCA-pressure-treated tongue and groove splash planking; joints staggered 2400 mm at poles, nail with 2-125 mm galv. spiral nails per plank, rip top plank as shown
 - 19 optional 50 mm polystyrene insulation, cover with 5 mm high-density recompressed asbestos board
 - 20 optional rodent stop; galv. hardware cloth 450 mm wide, fitted and stapled to (8) and (18)
 - 21 exterior metal cladding; asphalt felt wind stop; 38 x 140 mm girts @ 600 mm oc, bottom girt pressure-treated; RSI- 3.5 friction-fit insulation; 150 µm polyethylene; 7.5 mm 'exterior sheathing' plywood (face grain vertical); 38 mm galv. large-head roofing nails 150 mm oc around edges and 200 mm oc at other support members
 - 22 38 mm blocking between poles
 - 23 38 x 184 mm blocking between trusses
 - 24 steel ceiling screwed through polyethylene to (11) (see plan M-9371)
 - 25 38 x 89 mm girts fitted into gable truss, spacing to suit exterior cladding
 - 26 900 x 100 mm deep coarse gravel splash pad, or add eaves trough

Revised and re-issued 82-07

SYM	REVISIONS	CHECKED	DATE	APPROVED

CANADA PLAN SERVICE INSULATED POLE FRAME WALLS

DESIGNED <i>JET</i>	DATE 79-09	PLAN NO. M-9314
DRAWN <i>R. PELLA</i>	REVISED 82-07	YOUR PLAN NO.
TRACED	ORIGINATES ON SHEET A	SHEET OF
CHECKED <i>JET</i>	DRAWN ON SHEET B/C	